



2332 Via Anacapa Palos Verdes Estates 90274

LP \$1,178,000 - SP: \$1,170,000

MLS#: **S10047645** Status: **S** TG #: **792E7** Sqft: **1,922/10,490**
 Bdr/Ba: **3/3** Pool: **Yes** View: **No**
 YrBit: **1950** Type: **SFR** Gar: **2**



1229 Via Coronel Palos Verdes Estates 90274

LP \$1,285,000 - SP: \$1,250,000

MLS#: **V10024763** Status: **S** TG #: **792F7** Sqft: **2,425/12,390**
 Bdr/Ba: **4/3** Pool: **No** View: **Yes**
 YrBit: **1963** Type: **SFR** Gar: **2**



2540 Via Olivera Palos Verdes Estates 90274

LP \$1,350,000 - SP: \$1,330,000

MLS#: **V09002526** Status: **S** TG #: **792F9** Sqft: **3,562/6,660**
 Bdr/Ba: **4/4** Pool: **No** View: **Yes**
 YrBit: **1976** Type: **SFR** Gar:



2433 Via Pacheco Palos Verdes Estates 90274

LP \$1,599,000 - SP: \$1,540,000

MLS#: **V10027995** Status: **S** TG #: **792E7** Sqft: **2,830/8,164**
 Bdr/Ba: **4/3** Pool: **No** View: **Yes**
 YrBit: **1962** Type: **SFR** Gar: **2**



2308 Via Olivera Palos Verdes Estates 90274

LP \$1,725,000 - SP: \$1,668,000

MLS#: **V10028271** Status: **S** TG #: **792F7** Sqft: **3,254/9,500**
 Bdr/Ba: **5/4** Pool: **No** View: **Yes**
 YrBit: **1974** Type: **SFR** Gar: **3**



600 Via Estrada Palos Verdes Estates 90274

LP \$1,988,000 - SP: \$1,910,000

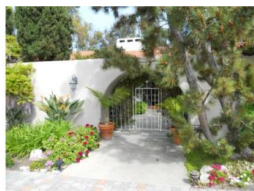
MLS#: **V10021607** Status: **S** TG #: **822E1** Sqft: **3,250/7,630**
 Bdr/Ba: **4/4** Pool: **Yes** View: **Yes**
 YrBit: **2005** Type: **SFR** Gar: **2**



1305 Granvia Altamira Palos Verdes Estates 90274

LP \$1,299,000 - SP: \$1,300,000

MLS#: **V10041706** Status: **S** TG #: **792J5** Sqft: **2,252/17,046**
 Bdr/Ba: **3/4** Pool: **No** View: **Yes**
 YrBit: **1960** Type: **SFR** Gar: **2**



1320 Granvia Altamira Palos Verdes Estates 90274

LP \$1,395,000 - SP: \$1,400,000

MLS#: **V10041641** Status: **S** TG #: **792J5** Sqft: **2,958/11,700**
 Bdr/Ba: **5/3** Pool: **Yes** View: **No**
 YrBit: **1968** Type: **SFR** Gar: **2**



533 Via Media Palos Verdes Estates 90274

LP \$1,999,000 - SP: \$1,950,000

MLS#: **S10030969** Status: **S** TG #: **792G4** Sqft: **3,051/7,140**
 Bdr/Ba: **4/3** Pool: **Yes** View: **Yes**
 YrBl: **1948** Type: **SFR** Gar: **2**



4057 Via Solano Palos Verdes Estates 90274

LP \$999,000 - SP: \$999,000

MLS#: **S10052885** Status: **S*** TG #: **793C3** Sqft: **1,410/7,800**
 Bdr/Ba: **3/2** Pool: **No** View: **Yes**
 YrBl: **1952** Type: **SFR** Gar: **2**



3129 Palos Verdes DR Palos Verdes Estates 90274

LP \$1,099,000 - SP: \$1,089,000

MLS#: **S10023990** Status: **S** TG #: **793A3** Sqft: **1,914/6,950**
 Bdr/Ba: **3/2** Pool: **No** View: **No**
 YrBl: **1951** Type: **SFR** Gar: **2**



3420 Via Palomino Palos Verdes Estates 90274

LP \$1,199,900 - SP: \$1,150,000

MLS#: **V09112111** Status: **S** TG #: **793A3** Sqft: **2,152/8,040**
 Bdr/Ba: **4/3** Pool: **Yes** View: **Yes**
 YrBl: **1952** Type: **SFR** Gar: **2**



101 Via Capay Palos Verdes Estates 90274

LP \$1,850,000 - SP: \$1,700,000

MLS#: **V10021469** Status: **S** TG #: **792J3** Sqft: **3,232/13,050**
 Bdr/Ba: **4/3** Pool: **No** View: **Yes**
 YrBl: **1963** Type: **SFR** Gar: **3**



3228 Palos Verdes Drive North Palos Verdes Estates 90274

LP \$1,599,000 - SP: \$1,705,000

MLS#: **S09123697** Status: **S** TG #: **793A3** Sqft: **4,376/11,250**
 Bdr/Ba: **5/6** Pool: **No** View: **Yes**
 YrBl: **2006** Type: **SFR** Gar: **2**