

3623 W 152nd St



SOLD • [Single Family Residence](#)

List / Sold: \$328,000 / \$380,500 ↑

1 days on the market • Listed on 10/13/2014

[3 beds](#), [1 baths](#) • [1,120 sqft](#) • [5,250 sqft lot](#) • [\\$339.73/sqft](#) • [Built in 1953](#)

3+1... [More](#)

Lawndale • [Map](#)

ML# SR14220625

15322 Cordary Av



SOLD • [Single Family Residence](#)

List / Sold: \$420,000 / \$410,000 ↓

94 days on the market • Listed on 10/27/2014

[3 beds](#), [1 baths](#) • [1,044 sqft](#) • [5,260 sqft lot](#) • [\\$392.72/sqft](#) • [Built in 1951](#)

Lovely single family residence ready to move in.... [More](#)

Lawndale • [Map](#)

ML# OC14229718

15417 Gerkin Av



SOLD • [Single Family Residence](#)

List / Sold: \$499,000 / \$511,000 ↑

8 days on the market • Listed on 04/26/2016

[3 beds](#), [1 baths](#) • [1,026 sqft](#) • [5,252 sqft lot](#) • [\\$498.05/sqft](#) • [Built in 1952](#)

"YOU'RE GOING TO LOVE THIS HOME!" Located in the West Side of the Highly Sought El Camino Village Neighborhood, this 3 Bedroom 1 Bath will welcome you home with the pride of ownership. Great opportunity to create a custom home of your choice with all the basic features and potentials or enjoy the true craftsmanship this vintage home offers. Upon driving up to your new home, a sizable front yard and ex... [More](#)

Lawndale • [Map](#)

ML# SB16087074

15239 Roselle Av



SOLD • [Single Family Residence](#)

List / Sold: \$499,000 / \$526,000 ↑

11 days on the market • Listed on 05/12/2016

[3 beds](#), [1 baths](#) • [1,106 sqft](#) • [7,053 sqft lot](#) • [\\$475.59/sqft](#) • [Built in 1951](#)

This home is located in a very nice family-oriented neighborhood in Lawndale. It is 1106 sqft on a 7053 sqft lot and offers 3 bedrooms, 1 bathroom. This is a great house for a new family looking to get their first home. Because of the way the street curves, the backyard is large and private, making it perfect for outdoor entertainment and children.... [More](#)

Lawndale • [Map](#)

ML# SB16101160

15723 Mansel Av # 5



Lawndale • [Map](#)

SOLD • [Townhouse](#)

List / Sold: \$385,000 / \$395,000 [↑](#)

53 days on the market • Listed on 05/02/2016

[3 beds](#), [3 baths](#) • [1,173 sqft](#) • [3,942 sqft lot](#) • [\\$336.74/sqft](#) • [Built in 1983](#)

High Desire area of Lawndale "The Heart of the South Bay". Gorgeous townhome located in the fabulous community, this charming end-unit features 1,173 square feet of living space with 3 Bedrooms and 2 ½ Bathrooms. This is our 1 Bedroom Downstairs and 2 Bedrooms Upstairs TownHome. The master suite features as balcony, brand new built-in air-conditioning unit. The master bath was fully remodeled with gra... [More](#)

ML# PW16092876

4633 W 152nd St



Lawndale • [Map](#)

SOLD • [Single Family Residence](#)

List / Sold: \$499,000 / \$499,000

18 days on the market • Listed on 04/21/2016

[3 beds](#), [2 baths](#) • [1,200 sqft](#) • [4,717 sqft lot](#) • [\\$415.83/sqft](#) • [Built in 1962](#)

This original charmer, is immaculate and move in ready! Spread out in 1,200 sqft with 3 bedrooms, 2 bathrooms, laundry room & living space. The living room is large and off the front door, with sight-lines to the dining space and galley kitchen! The kitchen is a great size with stainless steel double oven and black dishwasher, microwave and built-in stove. Just past the kitchen is a laundry room, with... [More](#)

ML# SB16083989

15203 Kornblum Av



Lawndale • [Map](#)

SOLD • [Single Family Residence](#)

List / Sold: \$569,000 / \$560,000 [↓](#)

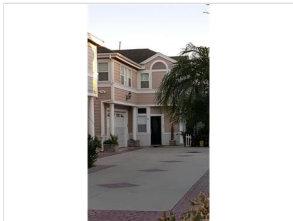
45 days on the market • Listed on 05/01/2016

[3 beds](#), [2 baths](#) • [1,044 sqft](#) • [5,252 sqft lot](#) • [\\$536.40/sqft](#) • [Built in 1951](#)

Move right in to this Beautiful upgraded single story home located in the El Camino Village area of Lawndale. This comfortable home welcomes all who enter with its inviting laminate floors throughout, dual pane windows and new kitchen with self-close cabinets, quartz counters, brand new Stainless Steel appliances and recessed lighting plus Indoor washer and dryer hookups. All bedrooms have recessed li... [More](#)

ML# PV16091749

4714 W 149th St



Lawndale • [Map](#)

SOLD • [Condominium](#)

List / Sold: \$549,000 / \$570,000 [↑](#)

19 days on the market • Listed on 05/10/2016

[3 beds](#), [3 baths](#) • [2,165 sqft](#) • [12,083 sqft lot](#) • [\\$263.28/sqft](#) • [Built in 1992](#)

BEAUTIFUL 2 STORY PROPERTY. MOTIVATED SELLER. MUST SEE TO APPRECIATE.... [More](#)

ML# DW16099981

4745 W 168th St



Lawndale • [Map](#)

SOLD • [Single Family Residence](#)

List / Sold: \$499,000 / \$530,000 [↑](#)

4 days on the market • Listed on 04/22/2016

[3 beds](#), [2 baths](#) • [1,028 sqft](#) • [5,800 sqft lot](#) • [\\$515.56/sqft](#) • [Built in 1947](#)

Don't miss out on this 3 bedroom 2 bathroom, beautiful Lawndale home just minutes from the South Bay Galleria! Gated entry with green lawn and colorful flower beds, large driveway and detached garage. The living room features laminate flooring and ample natural sunlight. Kitchen has granite countertops, stainless appliances, beautiful cabinetry. Master bedroom has en-suite, full bath. The backyard is p... [More](#)

ML# 16118100

### 16920 Firmona Av



Lawndale • [Map](#)

SOLD • [Single Family Residence](#)

List / Sold: \$635,000 / \$637,000 ↑

64 days on the market • Listed on 03/30/2016

[3 beds, 3 baths](#) • [1,873 sqft](#) • [7,286 sqft lot](#) • [\\$340.10/sqft](#) • [Built in 1957](#)

Located within walking distance of the shops and restaurants at South Bay Galleria, this single level 3 bedroom, 2.5 bathroom home features an open floor plan and plenty of parking space for cars and RV along with solar panels on the property. The large and spacious family room has a cozy fireplace and opens to the adjacent dining room. The kitchen features a double oven, plenty of storage space, cabin... [More](#)

ML# NP16065048

### 4750 W 166th St



Lawndale • [Map](#)

SOLD • [Single Family Residence](#)

List / Sold: \$599,999 / \$641,000 ↑

13 days on the market • Listed on 05/24/2016

[3 beds, 2 baths](#) • [1,479 sqft](#) • [4,751 sqft lot](#) • [\\$433.40/sqft](#) • [Built in 1947](#)

Want to live near the beach but not pay South Bay prices? This complete remodel has been a labor of love for the owner who now must move on due to a job transfer. Everything from NEW plumbing, NEW electrical, to a total NEW kitchen overhaul. From NEW bathrooms, freshly re-surfaced and treated hardwood oak floors, to New paint throughout and NEW windows. The kitchen offering the perfect blend of quar... [More](#)

ML# 16128318

### 14411 Kingsdale Av



Lawndale • [Map](#)

SOLD • [Single Family Residence](#)

List / Sold: \$424,900 / \$420,000 ↓

49 days on the market • Listed on 04/09/2016

[3 beds, 2 baths](#) • [1,026 sqft](#) • [2,508 sqft lot](#) • [\\$409.36/sqft](#) • [Built in 1965](#)

Nice 3 bed 1 1/2 bath home freshly painted inside and out, great home for first time buyers in a nice area. Property has a covered carport and large front yard area that will fit multiple cars in driveway. Kitchen has newer cabinets and counter tops and dishwasher, central heat and A/C for your comfort. walking distance to schools.... [More](#)

ML# RS16073843

### 15819 Prairie Av



Lawndale • [Map](#)

SOLD • [Townhouse](#)

List / Sold: \$475,000 / \$485,000 ↑

7 days on the market • Listed on 05/19/2016

[2 beds, 2 baths](#) • [1,906 sqft](#) • [12,562 sqft lot](#) • [\\$254.46/sqft](#) • [Built in 1977](#)

Beautiful Lawndale Townhome!! Property offer gorgeous high ceilings. Remodeled kitchen and bathrooms. Inside washer and dryer hock-ups, direct garage entrance... Close to major streets and easy access to freeways!!!... [More](#)

ML# PW16107625